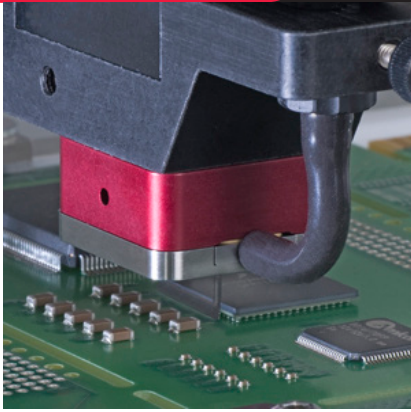




INNOVATION. PRECISION. EXCELLENCE.



System Specifications

Work Area (1 Valve/Tool):

330 mm x 300 mm x 100 mm
(13.00 in x 11.81 in x 3.94 in)

XYZ Repeatability

±50 µm (±0.002 in)

Drive Mechanism

Belt Drive

Motor

Stepper

Power

120 V, 220 V/50-60 Hz

Air

80 psi dry unlubricated air

Ventilation

300 CFM

Footprint

743 mm X 643 mm X 805 mm
(29.25 in x 25.32 in x 31.69 in)

Sigma

Benchtop Coating/Dispensing System

The Sigma benchtop is a compact three-axis robotic gantry ideal for automating a variety of dispensing and coating applications. Featuring multiple mounting positions, users can easily incorporate multiple chemistries or application techniques into their process.

With remote programming capability and image background import, programs can be quickly uploaded from your desktop utilizing Sigma's internal 2.4 GHz Wi-Fi network.

Sigma combines PVA's superior quality and global support in a flexible, multi-purpose robot that instantly brings repeatability to your manufacturing process.

The Sigma benchtop has many options and integrated features including:

- 5-inch touch interface with Wi-Fi connectivity
- Offline G-code numerical control programming
- Enclosed work area with safety interlock
- Single or dual valve mounting positions
- Standard jig plate mounting surface

For more information, please contact PVA at info@pva.net or contact your local representative.



Headquarters
One Mustang Drive | Cohoes, NY 12047
tel +1 518 371 2684 | fx +1 518 371 2688
www.pva.net | info@pva.net

